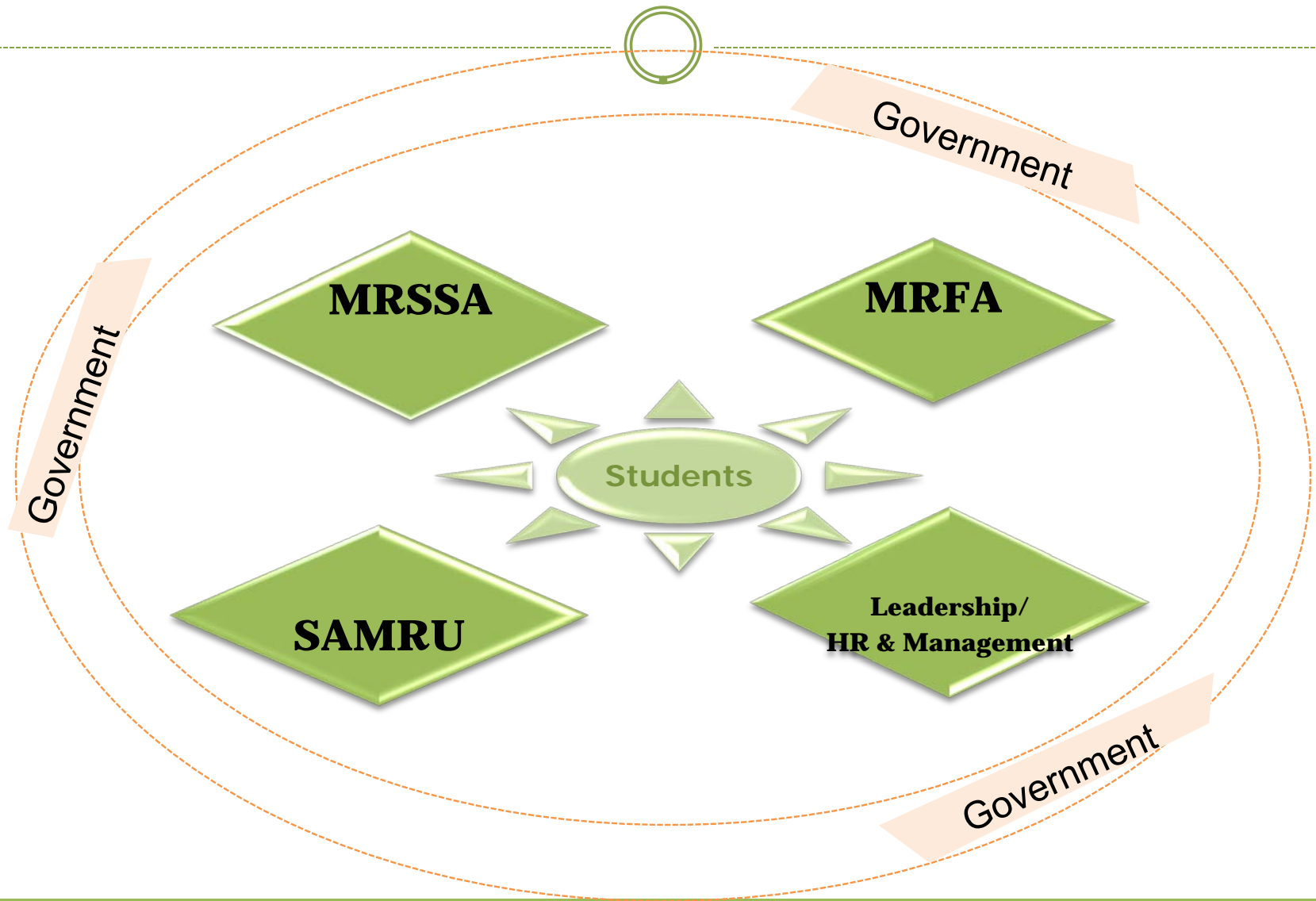


# The Mount Royal Support Staff Association



**WELCOMES YOU TO MRU**

# Our Organization – a complex system



# MRSSA Mission Statement



*“The Mount Royal Support Staff Association endeavours to maintain a mutual and respectful relationship between the Support Staff and Mount Royal University. The MRSSA has the responsibility of ensuring fair and equitable working conditions for staff and strives to uphold a constant communication link between the staff and the University. We recognize and promote important contributions and continued efforts of our staff. In a collaborative effort, the MRSSA and Support Staff build the foundation of strength upon which the University rests.”*

# Executives 2011/2012



<b>Kathy Copithorne</b>	<b>Administrative Assistant</b>	<b>MRSSA</b>
<b>Baset Zarrug</b>	<b>President</b>	<b>IT Services</b>
<b>Maureen Bedard</b>	<b>1<sup>st</sup> Vice-President</b>	<b>Library</b>
<b>Kevin Yano</b>	<b>2<sup>nd</sup> Vice-President</b>	<b>Business &amp; Retail Services</b>
<b>Debbie Henson</b>	<b>Treasurer</b>	<b>Library</b>
<b>Bruce Thorpe</b>	<b>Board of Governors</b>	<b>IT Services</b>
<b>Suzanne Evans</b>	<b>Representative</b>	<b>Student Learning Services</b>
<b>Greg Hovdebo</b>	<b>Representative</b>	<b>Skills Investment</b>
<b>Teresa Nickason</b>	<b>Representative</b>	<b>Fees Office</b>
<b>Jeff Sheedy</b>	<b>Representative</b>	<b>Science &amp; Technology</b>
<b>Amanda Cerisano</b>	<b>Representative</b>	<b>Cont. Ed.</b>
<b>Mabelann Gathercole</b>	<b>Representative</b>	<b>Library</b>
<b>Christine Carter</b>	<b>Representative</b>	<b>ADC</b>
<b>Karen Hiebert</b>	<b>Representative</b>	<b>Nursing</b>

# How does the MRSSA support MRU?



- **Established MRSSA **scholarship** and **bursary****
  - for our students
- **Donate money to various MRU communities.**
  - Big Bob's BBQ – Picnic in the park
  - Employee Activity Day (EAD)
  - Season of Caring Christmas fund

# How does the MRSSA support MRU?



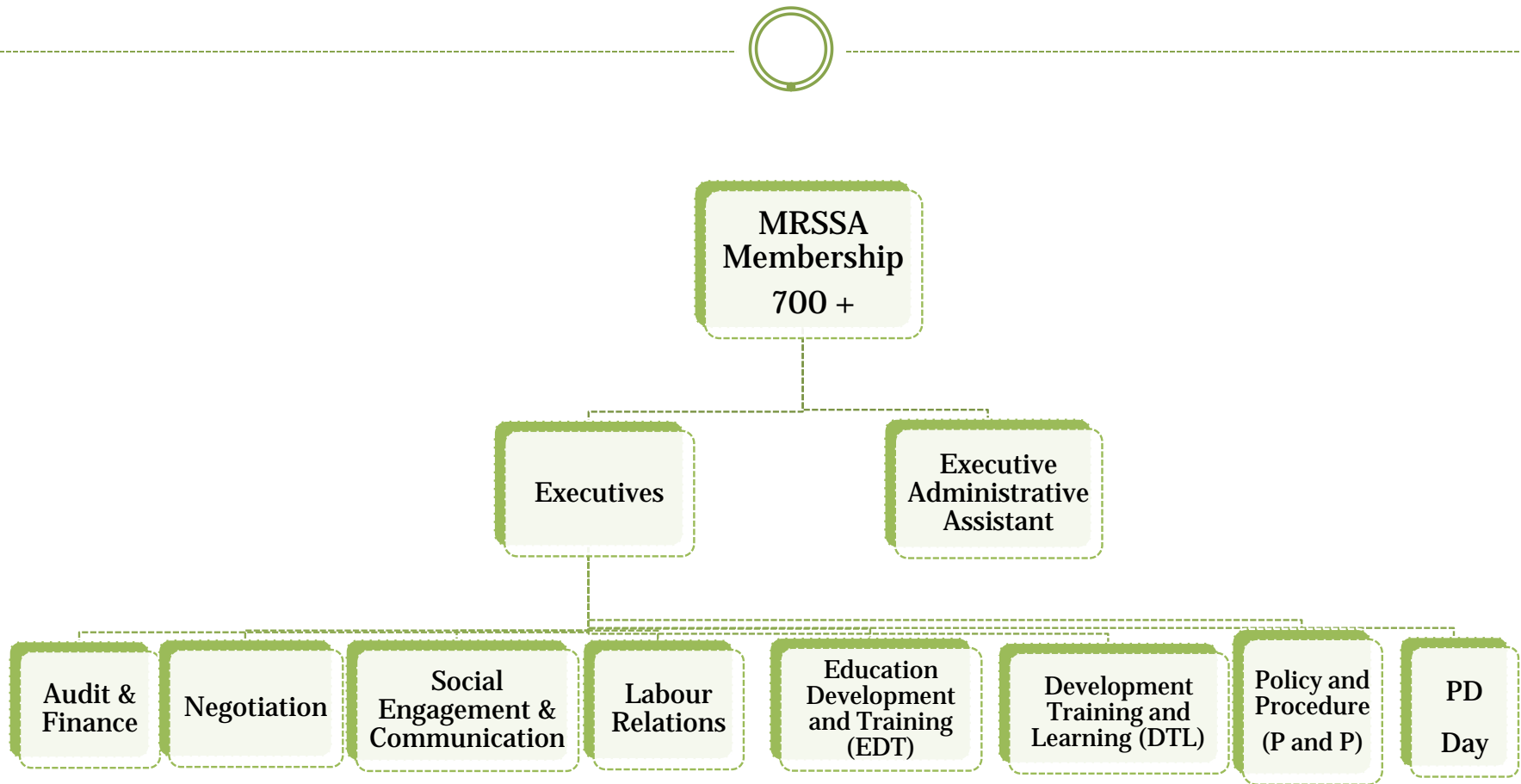
- Host the annual Stampede breakfast in July
- Present on numerous MRU committees.
  - Budget Advisory
  - Transportation
  - Academic Implementation
  - Alumni Advisory
  - Effective Team award
  - Access
  - Day care
  - Centennial planning
  - Diversity and more...

# What does the MRSSA do for you?



- **Answers questions regarding work or the Collective Agreement.**
  - We find answers and help you out
  - The MRSSA can represent you
- **Holds an AGM to review the year so that you can be fully informed**
- **Communicates quarterly with the on-line MRSSAY ! newsletter and monthly with the MRSSAY! Update.**
  - It is an interesting read full of “did you know” facts
- **Hosts Professional Development Day -1 day conference in May**
  - This consists of a variety of sessions pertinent to both the work environment and to our personal lives, and of course time to meet and mingle with our fellow staff members.

# MRSSA Organizational Chart and Committees



# EDT Committee Information



- **General form (GREEN):** If you are taking any recreation course, any craft course or conference, the **GREEN** form is the form used to request funding. You do not have to have passed the probationary period to apply. The course taken must be a group course and not an individual lesson.
- **Accredited Post Secondary Institution (SALMON):** If you are taking any continuing education courses, a credit course or any on-line courses that are from an accredited institution, the **SALMON** form will be used. You must have passed the probationary period (6 months) to apply for this.
- **Dependant Bursary (BLUE):** If you have dependants under the age of 25 or a spouse attending Mount Royal University, the **BLUE** form is filled out to receive a bursary. You must have passed the 6 month probationary period. The dependant must keep an average of 2.0 and be taking at least 9 credits. This is offered in only the Fall and Winter semesters.
- **Completion Forms:** A white half sheet titled “Completions form” must be submitted once your course is complete. It requires the signature of the instructor. If you are enrolled in a credit course, a copy of your grades is required.
- You may apply for as many courses as desired per semester but will only receive a maximum of \$1000 reimbursement each semester.
- **Funding Formula:**  
The individual baseline grant is calculated from the funding allocated for the semester divided by the number of applications. Since many of the applications are for less than the calculated grant, the total difference is divided by the grant requested, resulting in a percentage that is awarded over and above the baseline grant.
- **Email account [edtmrssa@mtroyal.ca](mailto:edtmrssa@mtroyal.ca)**

# Communication



## **We work diligently at communicating with the MRSSA members:**

- ✦ Office is located in W301 and can be reached at local#5993 or [mrssa@mtroyal.ca](mailto:mrssa@mtroyal.ca)
- Website with all of our information [www.mrssa.ca](http://www.mrssa.ca)
- The MRSSAY! newsletter and MRSSAY! Updates published by MRSSA volunteer members.
- Hold an AGM to review the year
  - one hour release time to attend the AGM - November 30, 2011
- Coffee breaks during reading week to discuss any questions, issues or just to get an idea of what MRSSA members' needs are

# Volunteering for MRSSA and MRU



**Have you ever volunteered?**

# Volunteering for MRSSA and MRU



**Why do you volunteer?**

# Benefits and Rewards of Volunteering



- **Build MRSSA and MRU community connections**
- **An opportunity to interact with MRU colleagues**
- **Add value to the MRSSA and MRU**
  - **contributing more to the success of the organizations**
- **Engage in a dialogue with community members in meetings and other events**
- **The Feel Good Factor – a private smile!**

# Benefits and Rewards of Volunteering



- Influence the growth of MRSSA and MRU
- Tapping into the experience of colleagues
- Important in sustaining a healthy and vibrant MRSSA and MRU communities
- Working with others to make a meaningful contribution to better MRU and MRSSA communities.

# How can I contribute?



- **Get involved:**
  - ❖ **One person advocating change will get creamed**
  - ❖ **Two people can commiserate**
  - ❖ **Three people can start a revolution**

# What our Employees say about MRU...



**“We soar above all by exceeding the personal and professional dreams of our community by creating a supportive balanced life style that feeds the heart and soul and not the pocket and ego”**





Thank you  
And  
Welcome  
To  
MRU